

POWERS

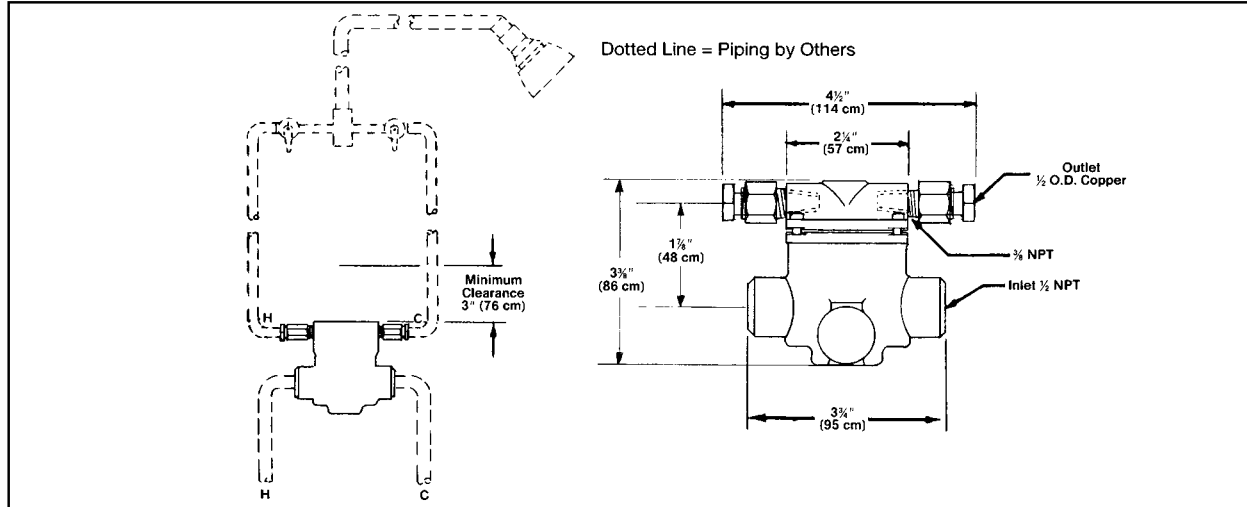
A WATTS INDUSTRIES CO.

TECHNICAL INSTRUCTIONS

Pressureguard Pressure Balancer

Product 410-0063

Form TI410-PG V1

**TECHNICAL INSTRUCTIONS**

The Powers Pressureguard is installed on the inlets to a water fixture (shower faucet set, shower mixer, shampoo sink, etc.). It serves to balance out any pressure fluctuations or differences in pressure between the hot and cold water lines.

The outlets of the Pressureguard must go directly to the fixture which it serves with no branches to other fixtures. (See figure above).

MOUNTING POSITION

1. Unit may be mounted in a "y" position (vertical, horizontal, etc.).
2. Mounting should allow access for bonnet removal (3 inch min.)
3. Provide access panel or door for concealed installations.

PIPING

1. Inlets are 1/2 inch female pipe threads in body.
2. Outlets are 3/8 inch female pipe threads in bonnet.
3. Outlet fittings for use with 1/2 inch O.D. Copper piping provide a union style of connection and are provided with unit.
4. Hot water may enter either inlet.
5. Hot water outlet is on the same side as hot water inlet.

CALIFORNIA PROPOSITION 65 WARNING

WARNING: This product contains chemicals known to the State of California to cause cancer and birth defects or other reproductive harm.
(Installer: California law requires that this warning be given to the consumer.)

For more information: www.wattsind.com/prop65

CARTRIDGE REMOVAL

1. Disconnect outlet fittings.
2. Remove four bonnet screws.
3. Pull bonnet straight off body (and couplings).
4. Pull or pry cartridge straight out of body.
5. Clean and flush piping before re-installing.

CARTRIDGE REPLACEMENT**(Kit No. 410-248)**

1. Lubricate internal sides of body with light grease or soap.
2. Place large O-rings in grooves on side of cartridge.
3. Align cartridge so cartridge inlets lined up with body inlets.
4. Slide cartridge straight into body casting.
5. Place new gasket on bonnet.
6. Slide bonnet onto couplings and press firmly.
7. Install the four bonnet screws.
8. Reconnect outlet piping.

NOTES

- (1) Both water pressures must be present for unit to function; loss of one water pressure will result in the other water pressure being shut off.
- (2) Water capacity is 6 GPM for each side (12 GPM for both) at 45 PSI pressure differential and 1/2" pipe connections.
- (3) See figures above for roughing-in dimensions.

POWERS

A WATTS INDUSTRIES CO.